

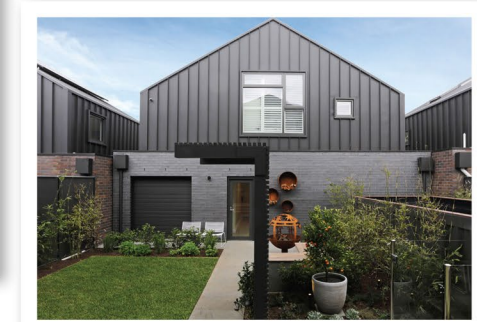
**LOVE
THE BLOCK?
GET THE
BRICKS**

**THE NEW
BLOCK**

THE BLOCK TACKLED A WHOLE STREET, BRINGING INSPIRATION (AND A LITTLE CHAOS) TO A QUIETLY GENTEEL SUBURB OF MELBOURNE. HERE'S HOW TO GET THE LOOK.



Creating a more reusticated, textured finish with this blend of interesting bricks designed and used for the first time on The Block.



The 2017 season of The Block showcases the hottest trends in bricks – dark colours, blends of rich textures, complemented by dark metal cladding and slimline roof tiles.

This year the show centered on five rescued weatherboard homes renewed and then added to in the form of spectacular and imposing two-storey modern brick additions, which feature some of the most innovative and exciting bricks in the PGH Bricks range.

Texture becomes the hero in the additions. Layering different structural materials underscores the tactile dimension of the darker tones in the brick selection.

Lead architect Julian Brenchley has been the architect behind the scenes at The Block from day one. “Really the outside is my domain. Sourcing the houses, making sure the design works; that’s where I step in.”

Elsternwick is very much a traditional brick-and-tile suburb and Brenchley wanted to show respect for the neighbourhood aesthetic, while still adding elements of modernity to his design choices.

He chose a complementary palette of dark coloured face brick for the pavilions, while still including a diversity of textures and finishes. Three of the five teams – Sarah and Jason, Ronnie and Georgia and Josh and Elyse – have the same brick on the exterior walls, **Balmerino Blend**, a dry-pressed brick, which creates harmony within the development.

Brenchley decided to add complexity into the palette by using different textured bricks for the other homes – that of Hannah and Clint and Sticks and Wombat, while keeping with the same dark tones. Hannah and Clint’s house is “a blend of a really interesting brick **Mystique** and the sandstock brick **Greenway** because

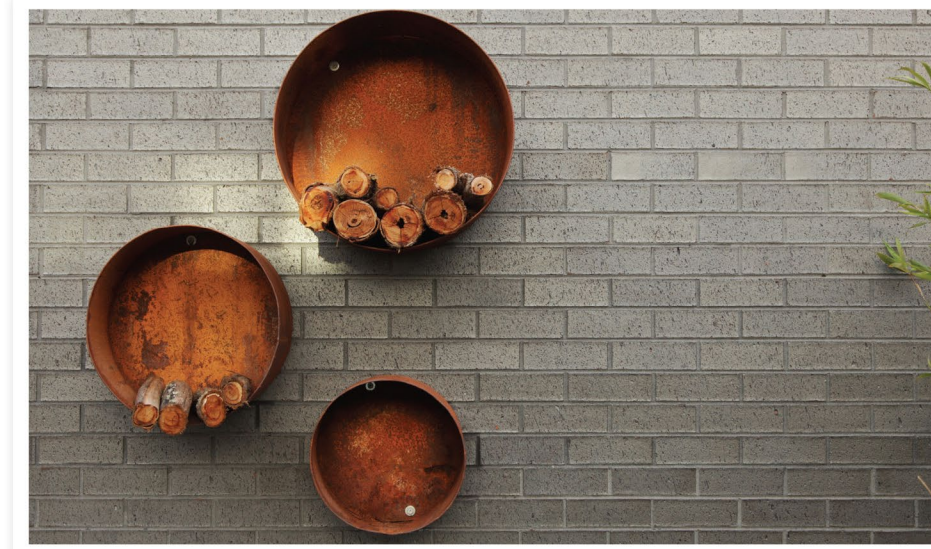


We hear from Julian Brenchley, architect of The Block.

they use the same colourway as Balmerino, but with a more rusticated, textured finish”, he says. “Which is really great. The intention there is to keep the same colourway, so not to stand out like a clown, but the texture in the blend gives it a real bit of a life in amongst the houses.”

“With Sticks and Wombat’s house, we used a deep dark brick – Pewter – which is a semi-glazed metallic brick. It’s really a great brick. So the idea is that the colourway is the same for all of the houses but we are picking out texture in Hannah and Clint’s house and the metallic finish in Sticks and Wombat’s.”

What also makes the bricks such an effective element of the houses is the dark colour shared by all bricks, another conscious decision on the part of Brenchley to create a powerful and modern palette.



Use a grey mortar to match the Pewter Metallic brick to achieve this seamless look.

THE LATEST TREND IN EXTERIORS IS TO COMBINE TWO OR MORE DIFFERENT MATERIALS TO CREATE A UNIQUE CONTEMPORARY LOOK. THIS HELPS BREAK UP LARGE EXPANSES AND DEFINES DIFFERENT AREAS OF THE HOME AND CREATE VISUAL INTEREST.

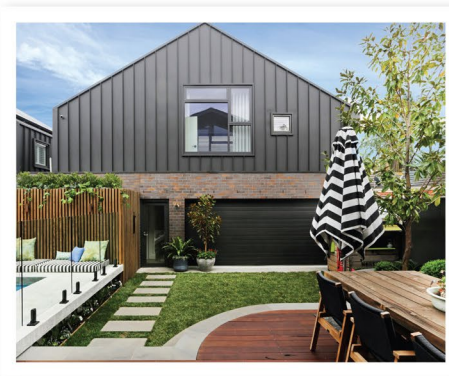


"Brick is a good choice because it is low maintenance and has classic appeal" - Julien Brenchley, The Block Architect.

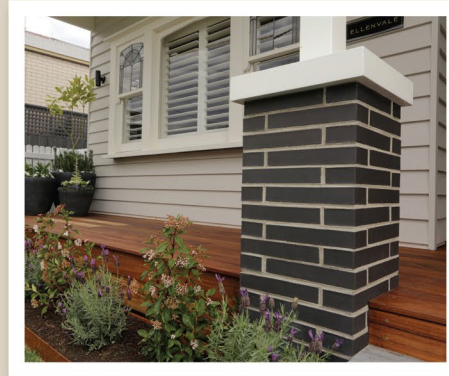
"We got the bricklayers to use a darker grout, so you see more of the brick colour, not the mortar colour," he explains. "If you use a lighter colour, your eye goes to the crisscross of the mortar pattern, which is itself a design idea or a design intent, but we've gone the other way. We want to see the brick rather than the mortar. And it's really quite a significant feature."

Brenchley says he always designs his buildings, whether for The Block or his own practice, with commercial reality in mind. Brick is a good choice because it is low maintenance and has classic appeal, he says.

"That's been the benefit of face brick since time immemorial," he adds. "You put up a face brick and as long as you are happy with the colour you won't have to touch it until you demolish it 80,100 or 200 years later. "Low maintenance is a big thing nowadays."



NEED AN ACCENT IN YOUR FACADE OR GARDEN? RECREATE JASON AND SARAH'S BRICK FEATURE WITH LINEAR BRICKS FROM THE MORADA COLLECTION.



Create a statement and interest with the Morada brick.



Open wooden beaded chandelier (colour: black)

Leff Amsterdam tone 35 wall clock (available in multiple colours)



Monte Carlo - Sunbrella fade and water resistant outdoor cushion (Includes PET Insert)



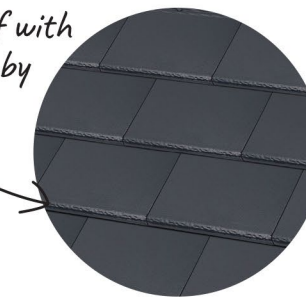
Lloyd Industrial table lamp

GET THE LOOK

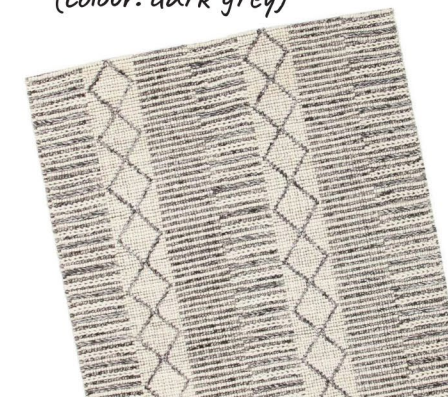


Banana leaves make great feature plants

Create a slimline roof with the Elemental series by Monier roofing.



Skandi rug (colour: dark grey)



Finn - single seater sofa (colour: whale)



*Find all furniture at theblockshop.com.au
Visit monier.com.au to find out more about the Elemental series.*

RECREATE THE LOOK WITH OUR RANGE OF BRICKS. THE BLOCK SHOWCASES THE HOTTEST TRENDS IN BRICKS DARK COLOURS, BLENDS OF RICH TEXTURES.



For further inspiration and information on the PGH Bricks range,
go to www.pghbricks.com.au or call 13 15 79

   @pghbricks

 **PGH** BRICKS & PAVERS™

© Copyright PGH Bricks & Pavers Pty Limited – all rights reserved 2017. PGH™, PGH Bricks & Pavers™ are registered trademarks of PGH Bricks & Pavers Pty Limited in Australia, other countries or both.